

Etasoft - EDI Validator 5.x

EDI Validator is designed for automated and semi-automated validation of EDI X12 files. It supports all EDI X12 40xx, 50xx, 60xx, 70xx message types.

Setup

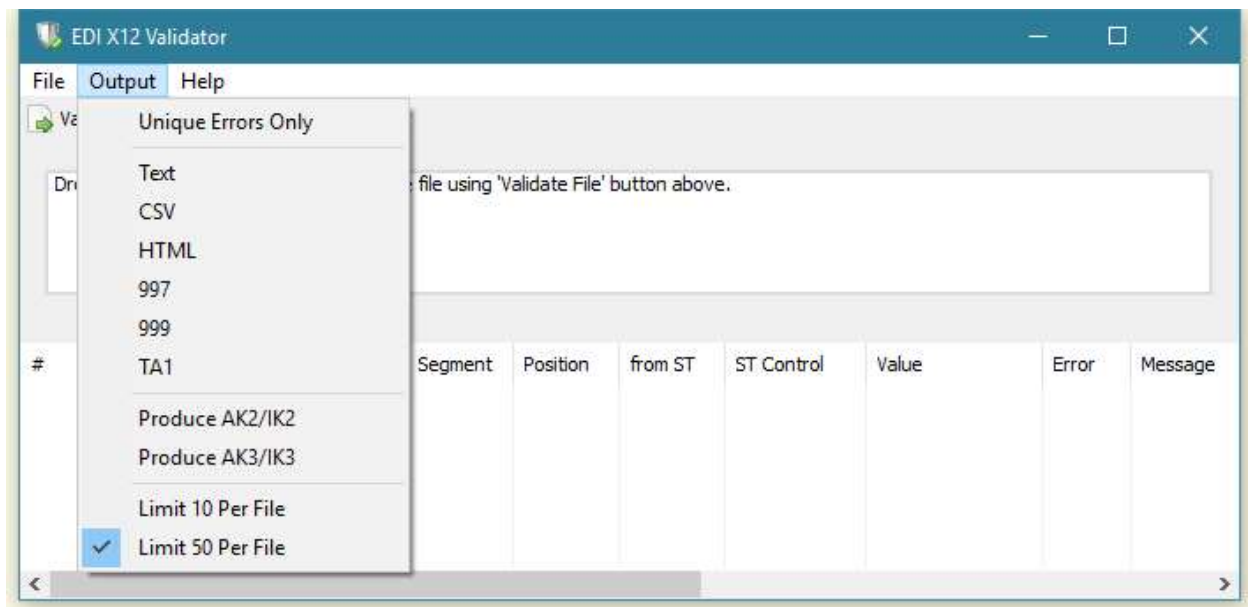
For Windows install the software using provided setup file edivalsetup.exe.

For Linux install the software unzipping the file edivallinux.zip.

Windows installation contains both GUI based and command line based validation tools. Linux package only contains command line validation tool.

Processing

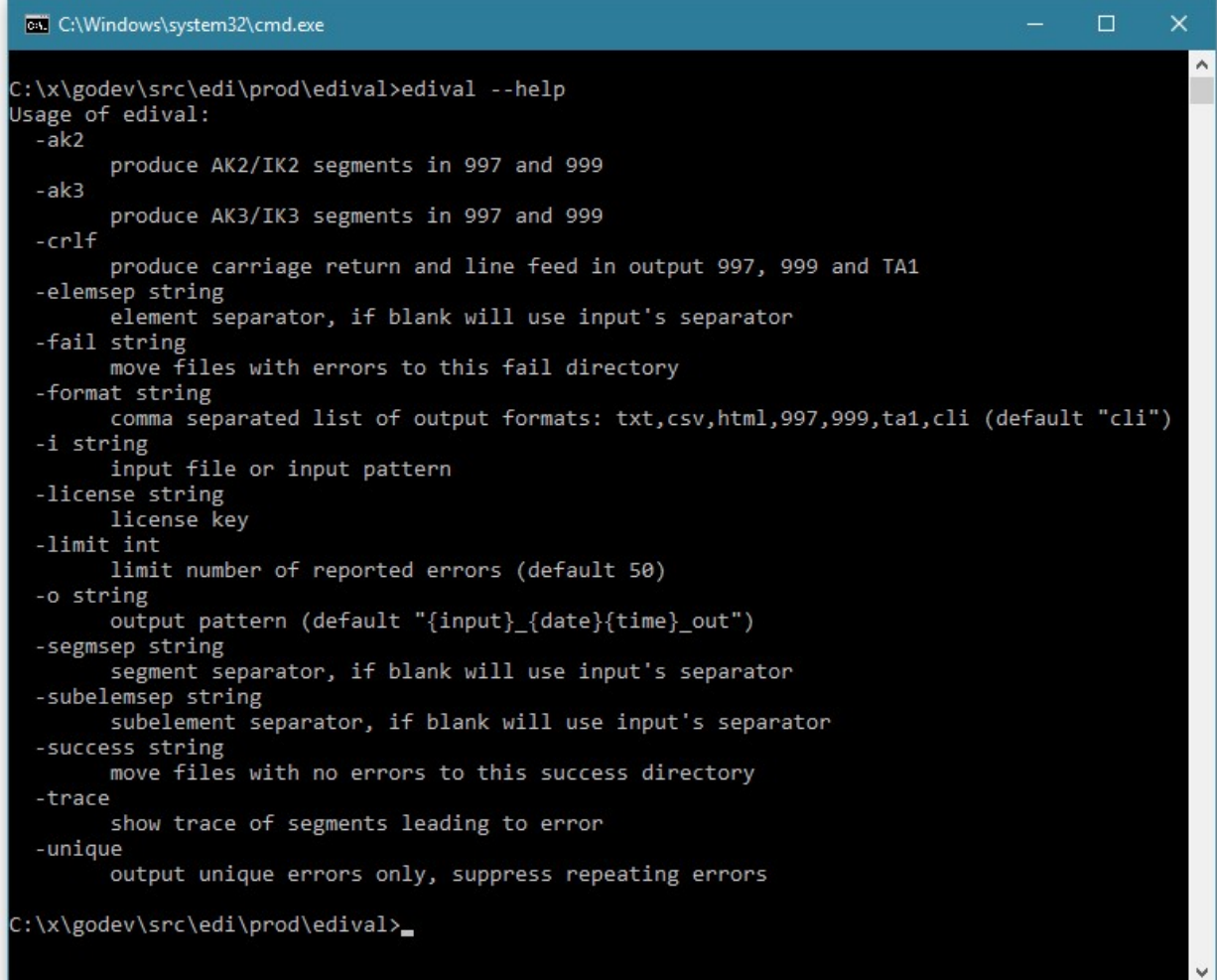
GUI based validation tool is designed for semi-automated processing. It can process single file or multiple files. Some of the additional options provided via Output menu.



In GUI only 50 errors are displayed per file. Command line tool does not have this limit.

Command Line Execution

Use utility called edival to run validations via command line. Command line tool has more flexible options. Run command line tool with “—help” parameter to find all available options.



```
C:\Windows\system32\cmd.exe
C:\x\godev\src\edi\prod\edival>edival --help
Usage of edival:
  -ak2           produce AK2/IK2 segments in 997 and 999
  -ak3           produce AK3/IK3 segments in 997 and 999
  -crlf          produce carriage return and line feed in output 997, 999 and TA1
  -elemsep string
                element separator, if blank will use input's separator
  -fail string
                move files with errors to this fail directory
  -format string
                comma separated list of output formats: txt, csv, html, 997, 999, ta1, cli (default "cli")
  -i string
                input file or input pattern
  -license string
                license key
  -limit int
                limit number of reported errors (default 50)
  -o string
                output pattern (default "{input}_{date}{time}_out")
  -segmsep string
                segment separator, if blank will use input's separator
  -subelemsep string
                subelement separator, if blank will use input's separator
  -success string
                move files with no errors to this success directory
  -trace
                show trace of segments leading to error
  -unique
                output unique errors only, suppress repeating errors

C:\x\godev\src\edi\prod\edival>
```

Few important parameters:

Use “-i “ parameter to specify input file. You can also use wildcards to process multiple files. For example:

```
edival -i=C:\prod\837\*.txt -license=EVGvtcG9yYXJ5fDIwMTYxMjA5fDF8RURJVkk=
```

This will process all files with *.txt extension in directory C:\prod\837.

Use “-o” parameter to specify output file name. By default output file name is formed using input file name, date, time, “_out” and specific extension (997, 999, HTML, etc.)

You can setup various macros to form output file names. Current default is “{input}_{date}{time}_out”.

Available macros:

{input} – use input file name

{date} – use date

{time} – use time

{nano} – use nano seconds.

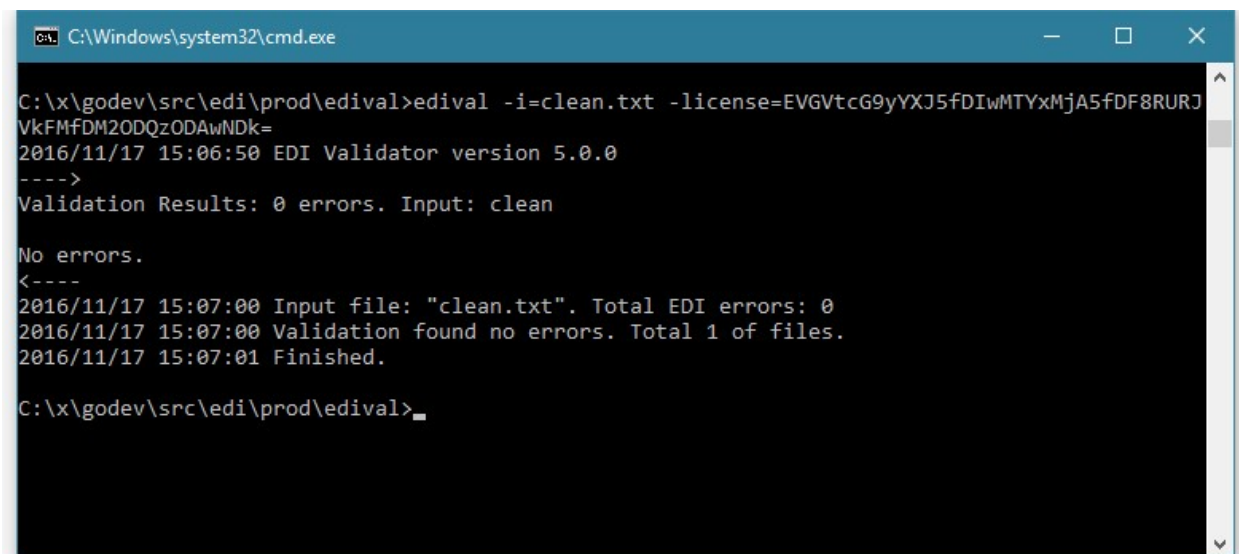
If you want output files produced as part of validation use “-format” parameter. It can have multiple values separated by commas. Example: –format=997,html,csv will produce 997, HTML and CSV output files.

If you want to exclude segments from validation use “-exclude” parameter. It is comma separated list of excluded segments. Some envelope segments cannot be fully excluded from validation and may still cause error. Critical segments such as ISA, GS and ST must start EDI file. If they are damaged beyond parsing validation may not be able to start and will report error.

Example of basic use:

```
edival -i=clean.txt -license=EVGvtcG9yYXJ5fDIwMTYxMjA5fDF8RURJvkFMfDMDQzODAwNDk=
```

This is very basic command line execution example. Our input file is called “clean.txt”. It has no errors.



```
C:\Windows\system32\cmd.exe

C:\x\godev\src\edi\prod\edival>edival -i=clean.txt -license=EVGvtcG9yYXJ5fDIwMTYxMjA5fDF8RURJvkFMfDMDQzODAwNDk=
2016/11/17 15:06:50 EDI Validator version 5.0.0
---->
Validation Results: 0 errors. Input: clean

No errors.
<----
2016/11/17 15:07:00 Input file: "clean.txt". Total EDI errors: 0
2016/11/17 15:07:00 Validation found no errors. Total 1 of files.
2016/11/17 15:07:01 Finished.

C:\x\godev\src\edi\prod\edival>
```

If any of the files fail validation command line tool returns non-zero exit code.

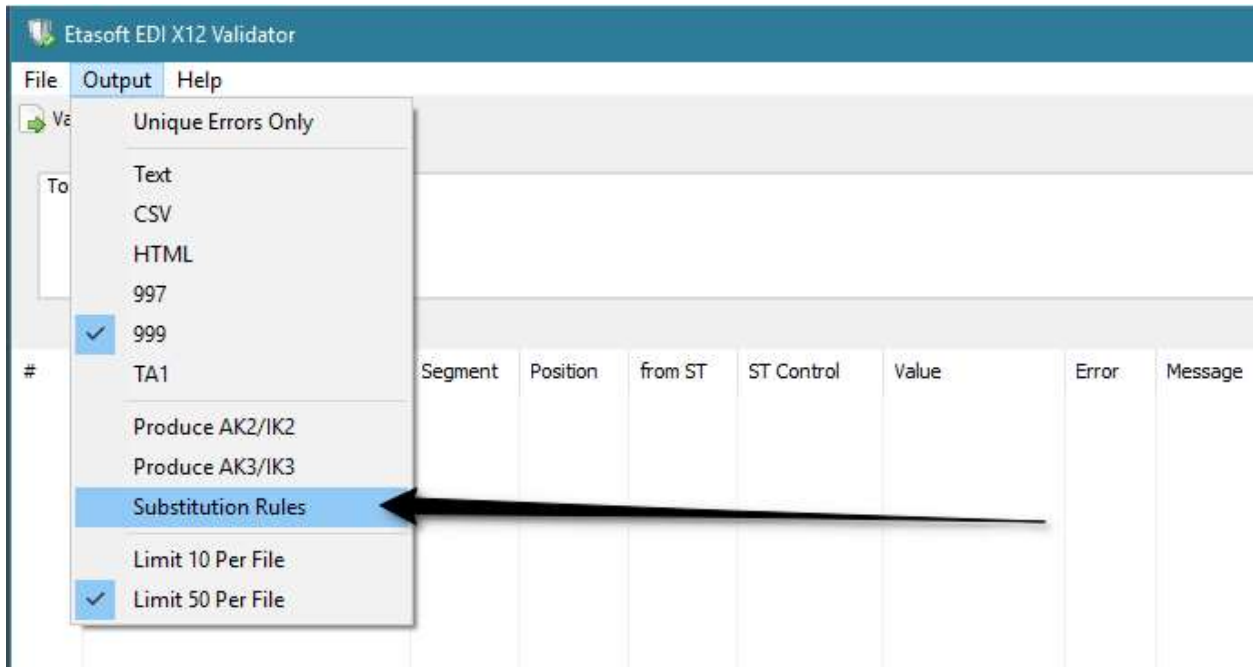
Zero exit code means no-error.

Custom Values in 997 and 999 Acknowledgements

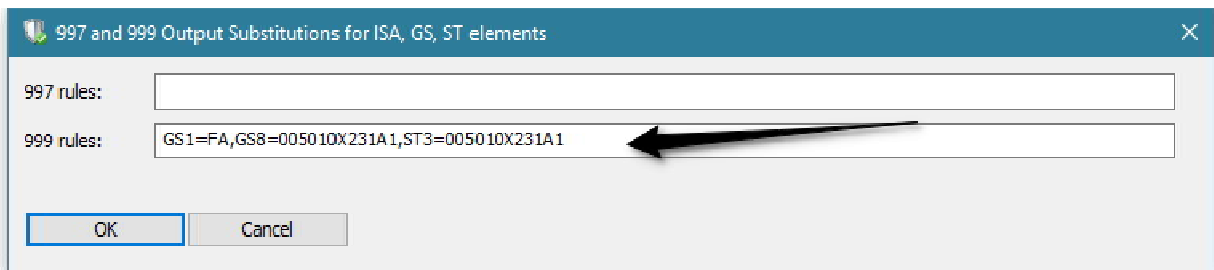
EDI Validator produces ISA, GS and ST segments for outgoing 997 and 999 acknowledgements using values from incoming EDI file. Sometimes this is not acceptable because 997 and 999

acknowledgements may have a requirement to have specific values inserted in certain elements.

EDI Validator lets you overwrite values for outgoing 997 and 999 elements inside ISA, GS and ST segments using Substitution Rules.



Enter Substitution Rules for 997 and 999 elements of ISA, GS and ST segments.



Rules have format: "SegmentElement=Value,"

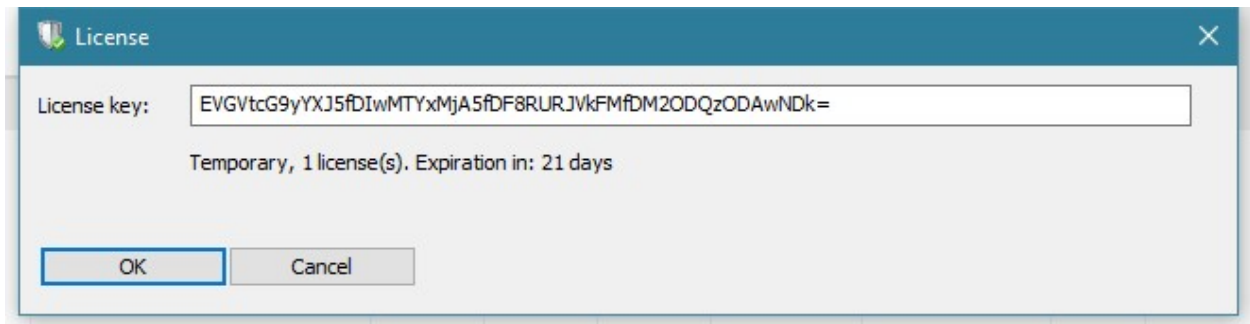
So expression "GS1=FA,GS8=005010X231A1" will place into 999 acknowledgement GS segment's element #1 value FA and into GS segment's element #8 value 005010X231A1.

Substitution rules also work via command line. Simply pass them via -997 or -999 parameter.

License

EDI Validator comes with trial and retail license. You can try and evaluate it free for 3 weeks. Once trial license expires please purchase license for continues use.

To start a trial version and receive license key for 3 weeks simply run GUI tool and open Help-License screen.



Use license key from GUI Help-License screen to run command line tool, and pass license into it via `-license` parameter.