



XTranslator guide on flat text file to EDI X12 translation

Copyright © 2005-2018 Etasoft Inc.
Main website <http://www.etasoft.com>
XTranslator website <http://www.xtranslator.com>

Basic requirements 2

How to define text file layout 2

How to define EDI X12 layout 6

 How to do the mapping.....10

 How to generate control numbers for ISA, GS, ST, SE, GE, IEA12

 How to set constant values to be produced all the time.....13

 How to produce other EDI specific data like Date and Time.....15

 How to produce simple incrementing count18

EDI X12 output 18

Basic requirements

This document describes the process of mapping flat comma separated text file to EDI X12 message for translation. In order to do the mapping you should have:

1. Original flat file with delimited fields. Fields can be delimited with comma or other delimiter character.
2. Documentation explaining EDI X12 message layout and structure. You should have some document that would list all the EDI X12 segments and elements that you need to produce from the flat text file.

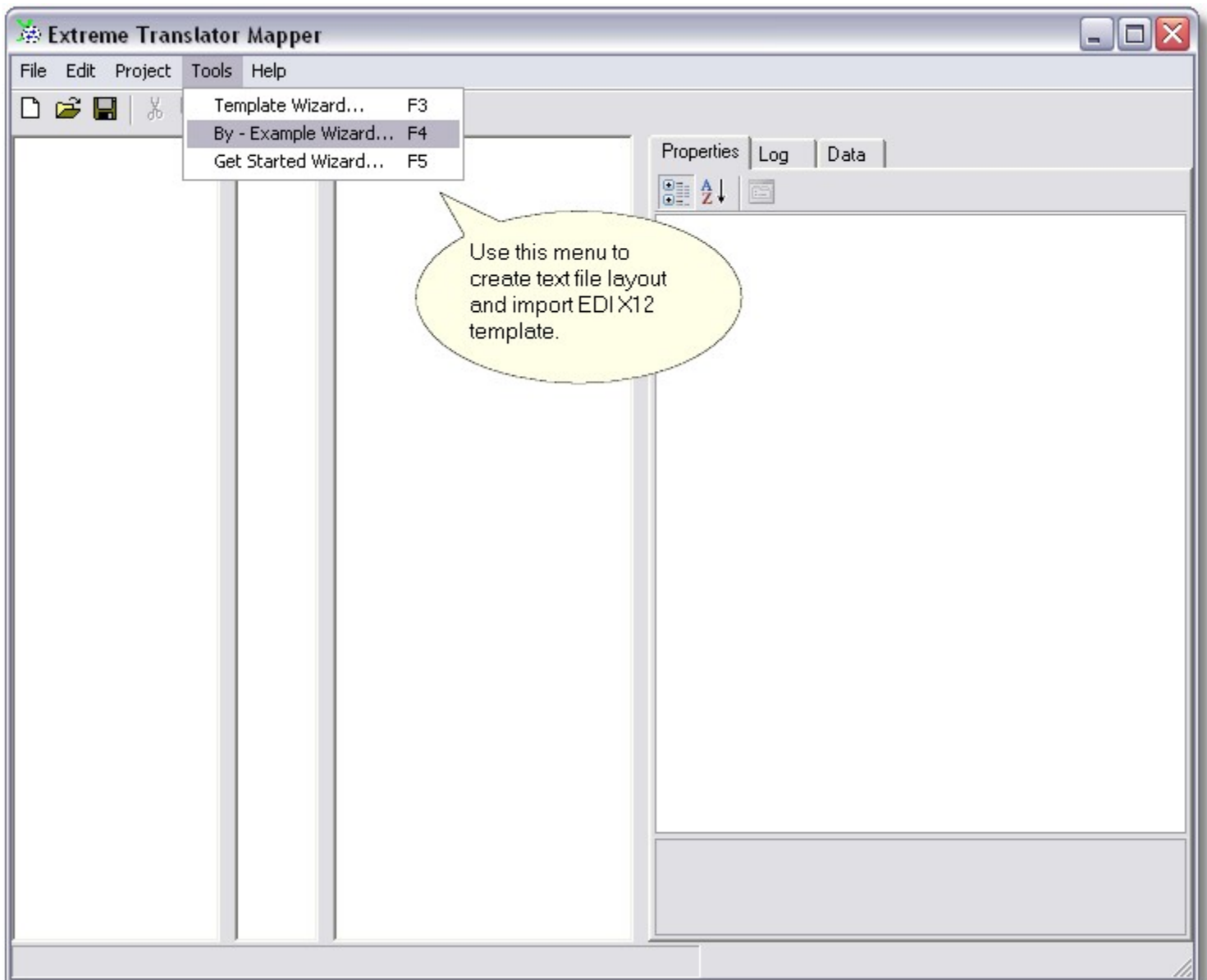
Contact your trading partner or supplier for simple documentation on EDI X12 message you need to produce from the flat file. This documentation usually lists some specific required segments and provides EDI X12 message number and release version number. In this document we have chosen to translate flat file to EDI X12 270 release 4010. Later releases also supported. Simply choose template for later release. Translator comes with number of templates accessible via Template Wizard.

Once mapping is done you do not have to recreate it again simply save it into the file with extension *.xmp. You can run map files using other utilities that come in the package (read User's Manual about other utility programs).

This document comes with complete map in a file with extension xmp. Please open and examine it as you read this document.

How to define text file layout

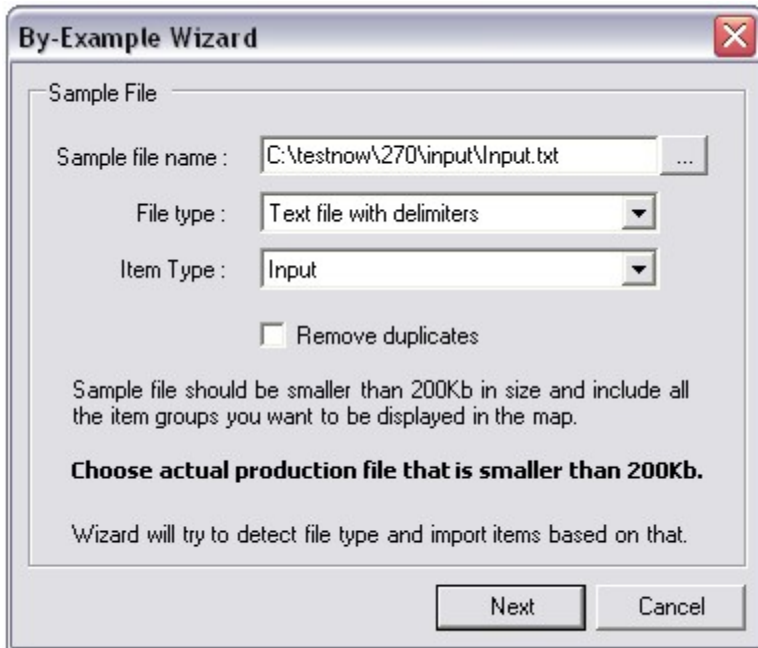
You can import flat file layout using By-Example Wizard (see next screenshot). This Wizard simply reads all delimited fields and creates mapping objects for them.



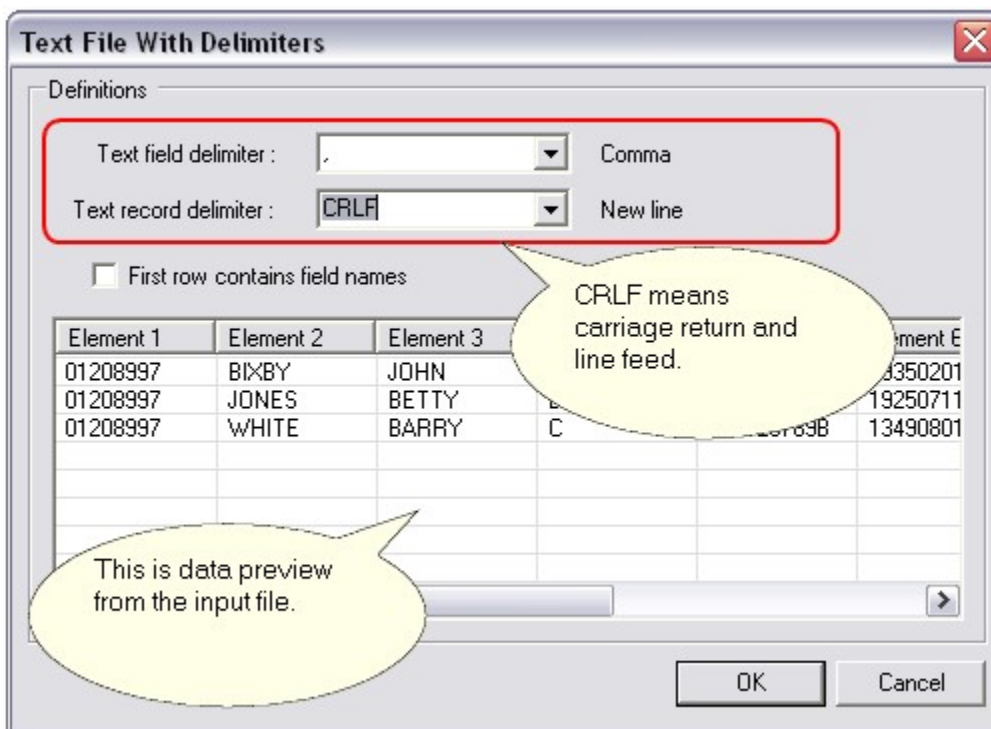
You can use Tools->By Example Wizard to import text file structure.

```
01208997,BIXBY,JOHN,L,999888777A,19350201,M,20050201,CK76276C
01208997,JONES,BETTY,B,123456789D,19250711,F,20050201,DB45612E
01208997,WHITE,BARRY,C,456123789B,13490801,M,20040101,BB58745W
```

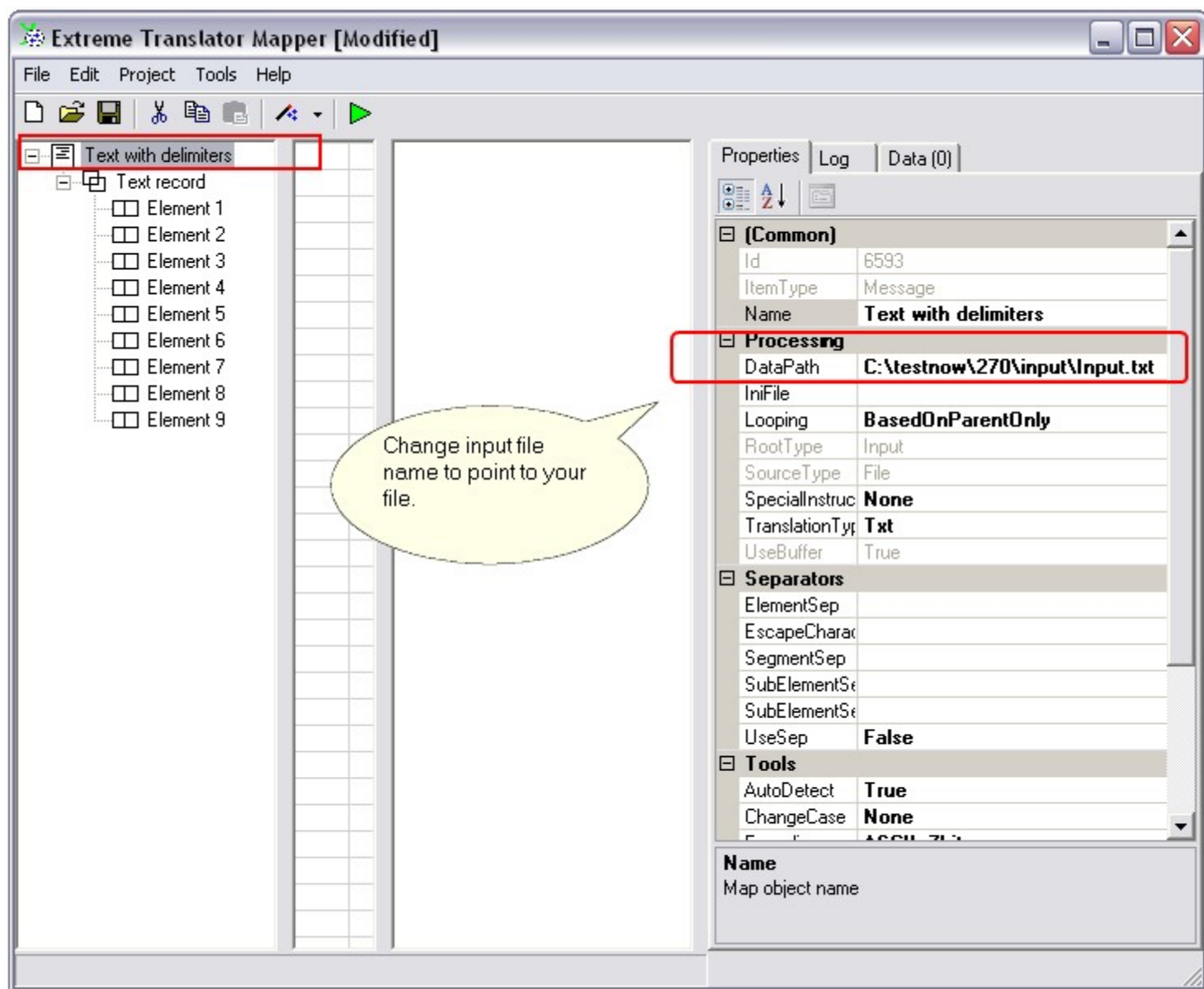
We will use By-Example Wizard on this input flat text file.



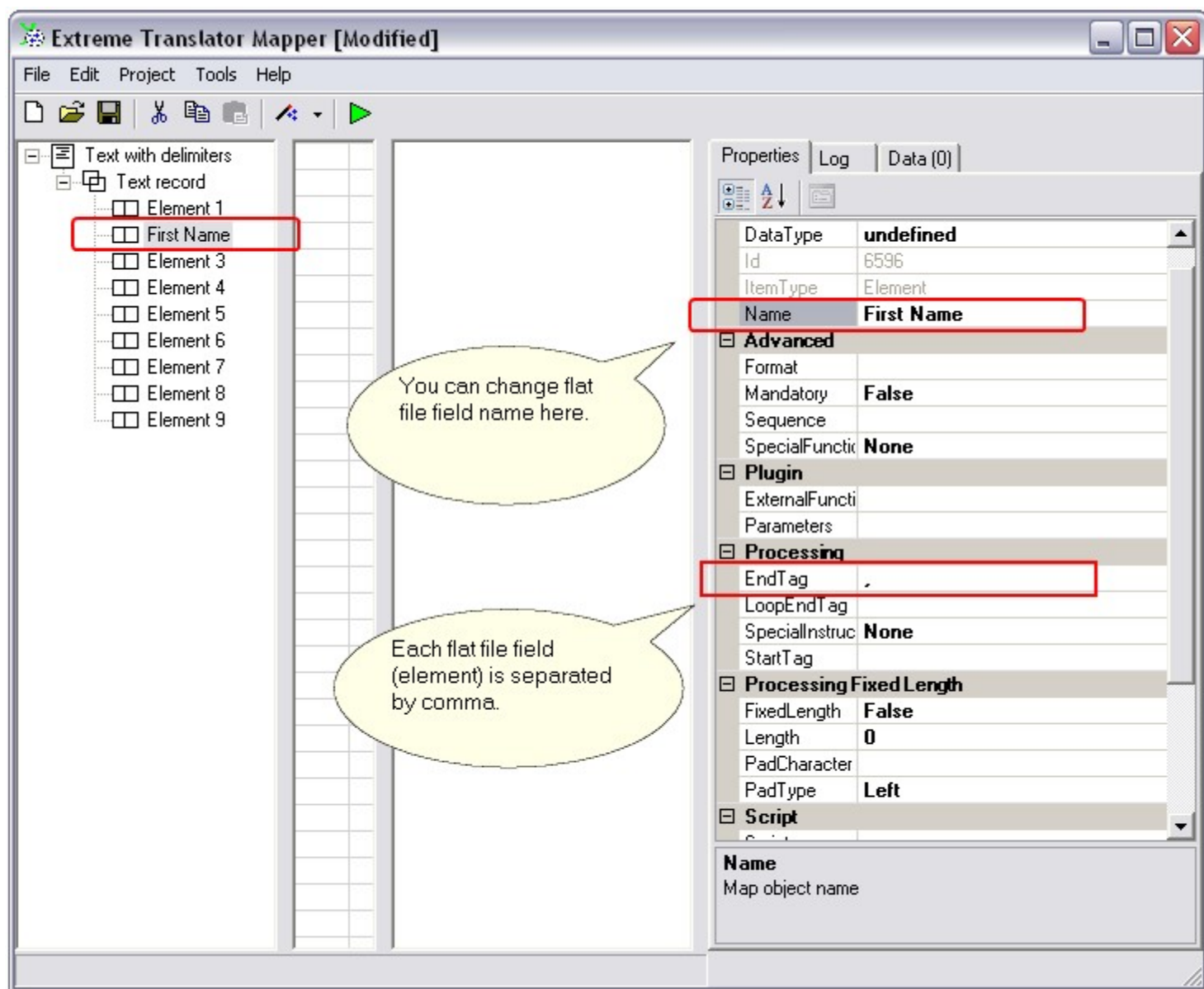
You can provide your flat input file in this screen.



Wizard can work with number of delimiters. If your flat file contains field names as first row of flat file, you can check "First row contains field names" and wizard will import field names, otherwise default names will be given. That is "Element 1", "Element 2", etc.



After file layout and field names are imported. You can change input file name and directory using DataPath property.



You can rename each flat text file field and define other delimiter for it.

How to define EDI X12 layout

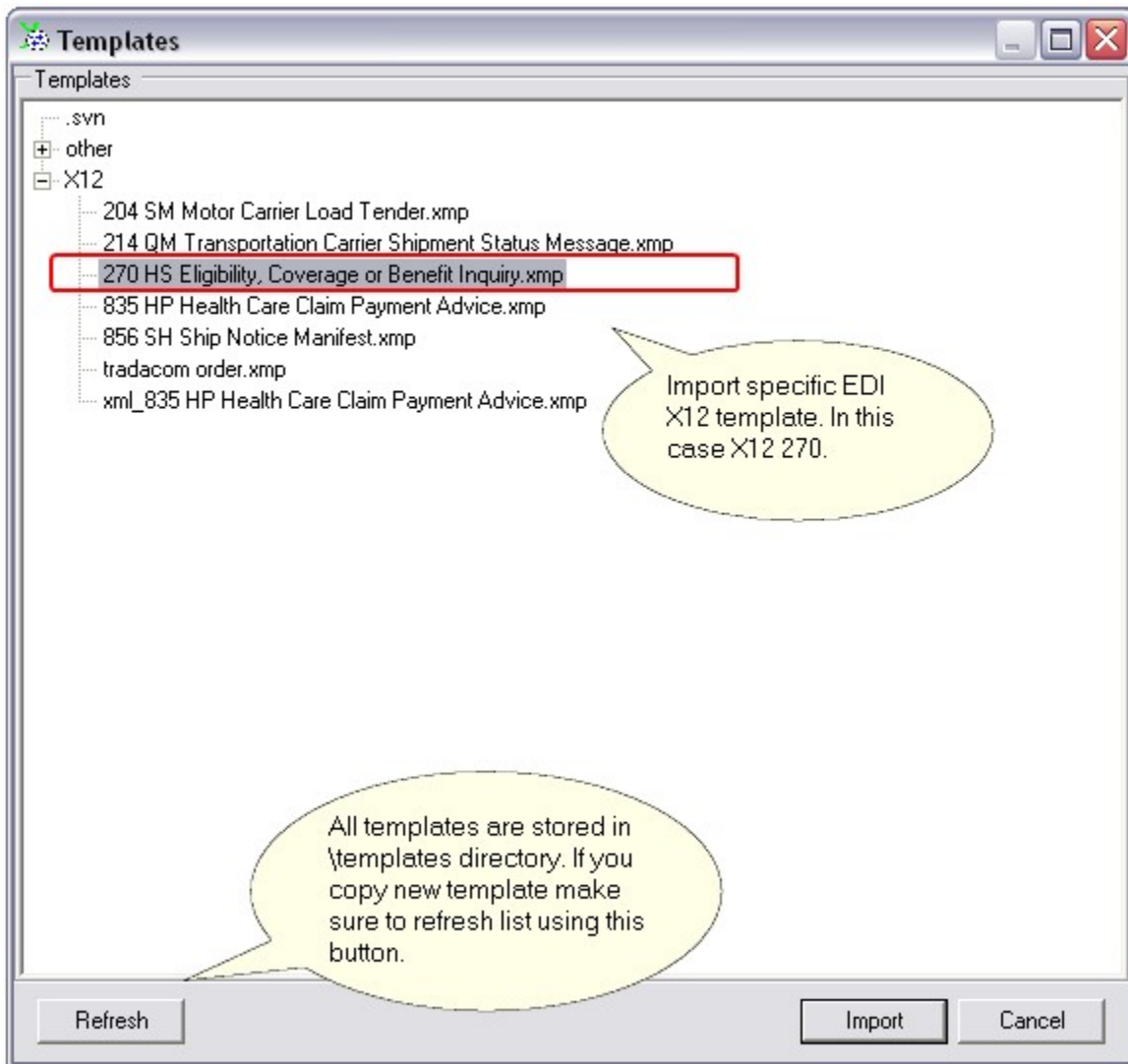
You can import EDI X12 layout using template from Template Wizard. Many EDI X12 templates are included with the product. We update and add more templates with every new release of the product. All templates are stored in \templates directory. Templates are grouped by release version.

Translator includes templates for major standard releases. It may not have all the minor releases.

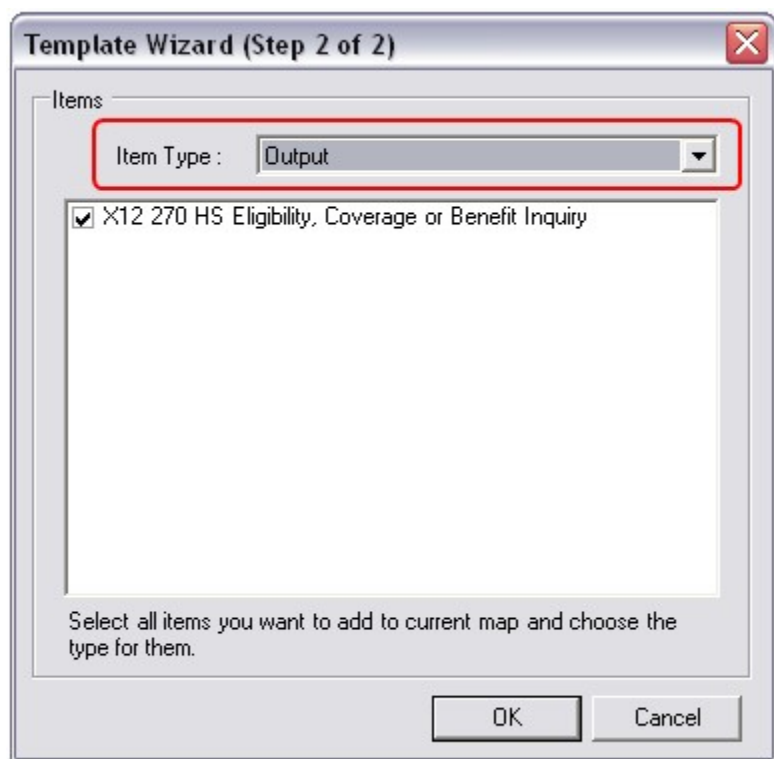
It is important to understand the difference between major and minor standard releases. In EDI X12 major releases numbered with schema "xx10" having last two numbers as "10" always. Translator has major releases 4010, 5010, 6010, etc. as templates but has no minor releases such as 5040 or 6030.

Most of a time only major releases are used for EDI implementations. If your trading partner requires minor release you can simply use major release as substitute. Example: use 5010 instead of 5040.

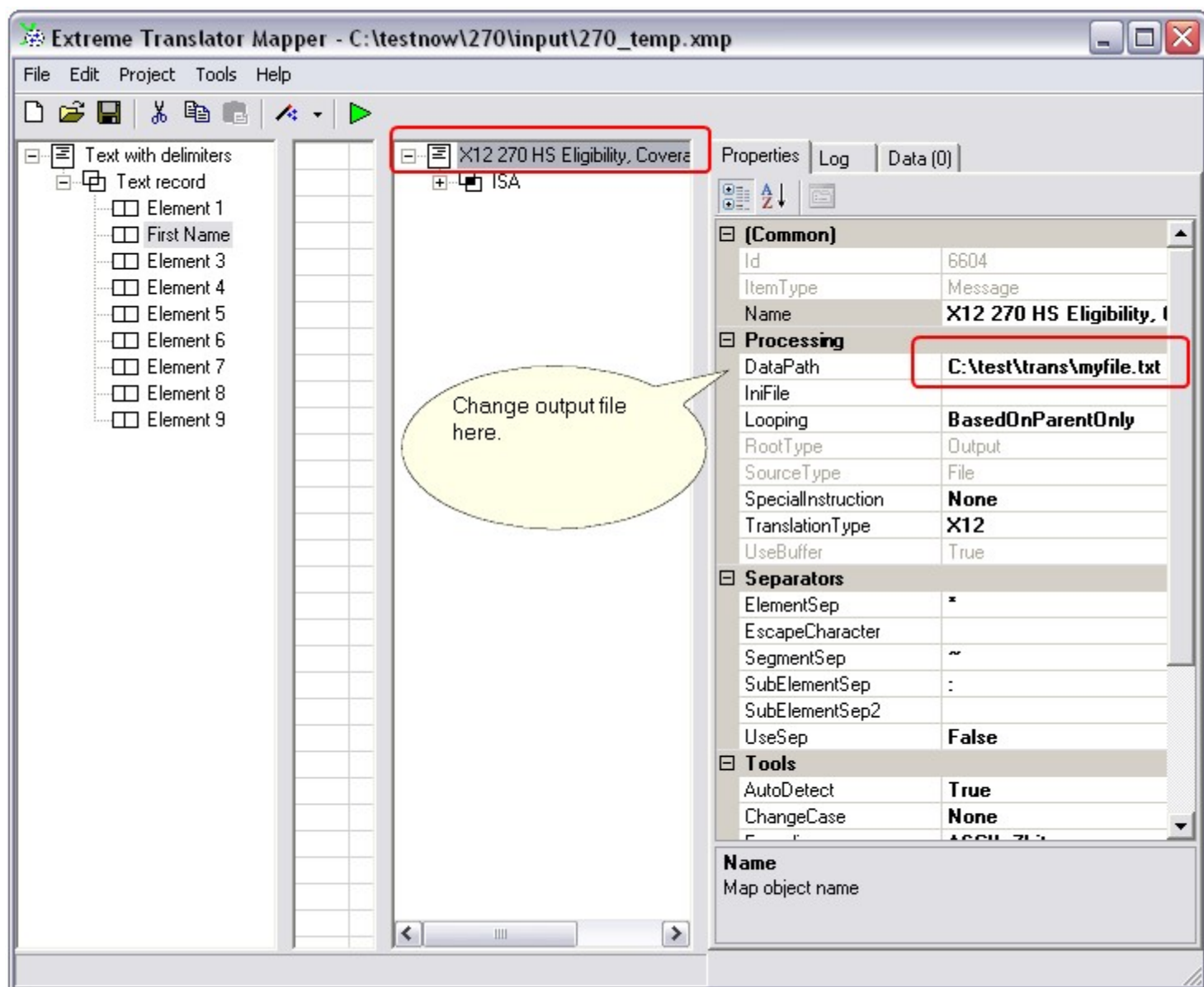
Some very small changes to the template might be required in order to adjust template for minor release.



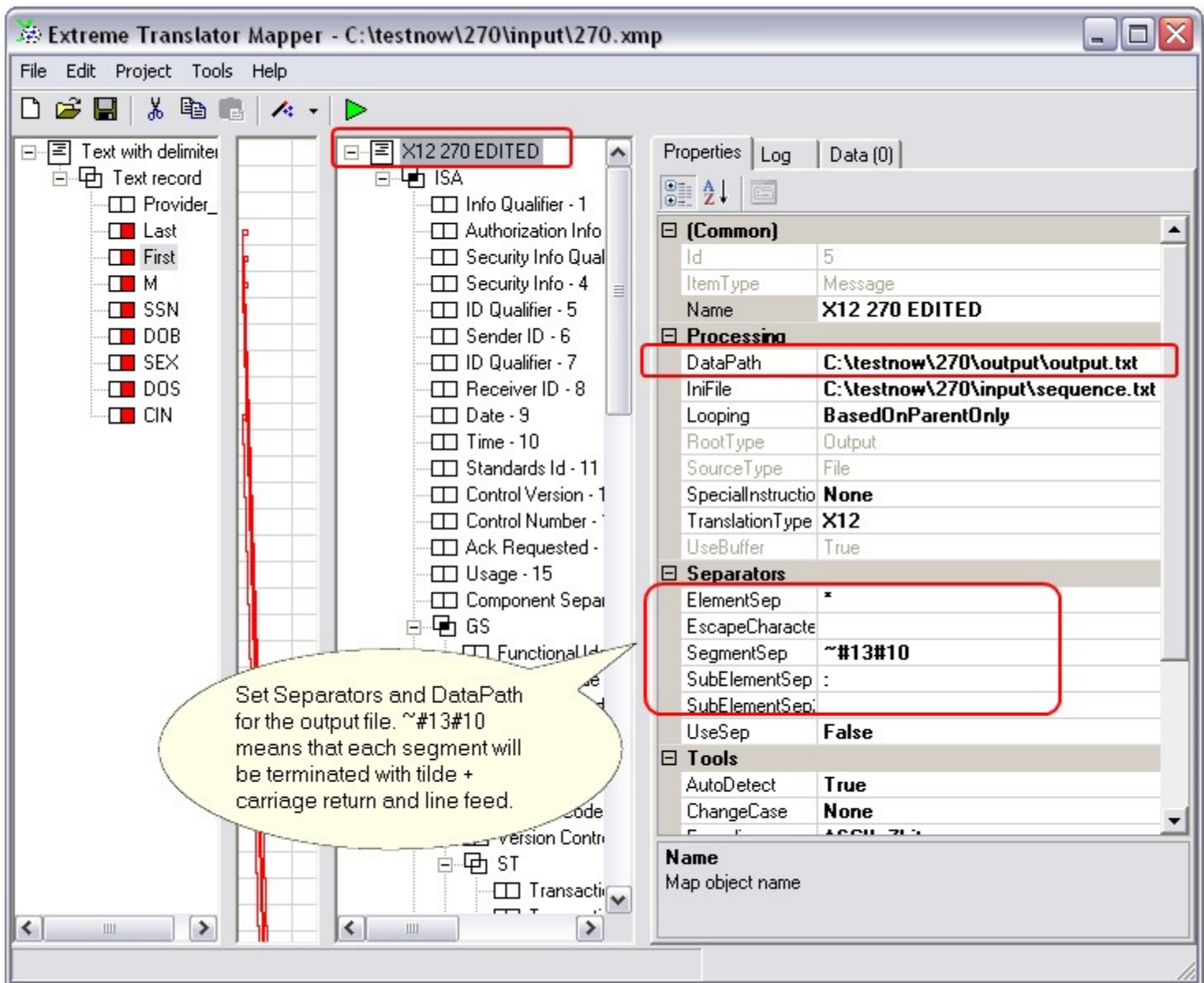
Template Wizard lists all the templates available in "templates" directory under translator software installation. Templates grouped by release version and message number.



Once you choose to import template, make sure to change its type to Output.

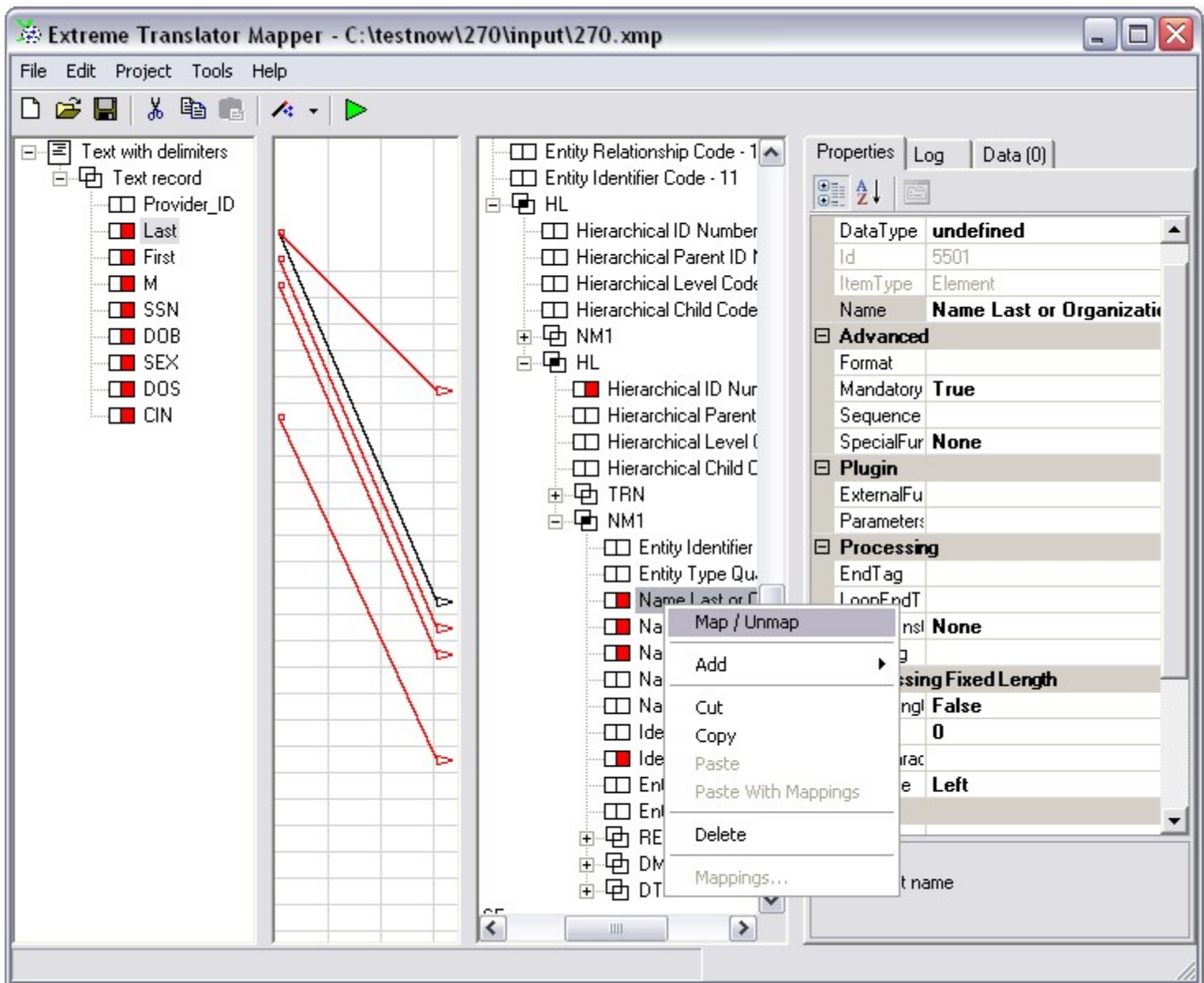


You can change output file name by changing value in DataPath property.



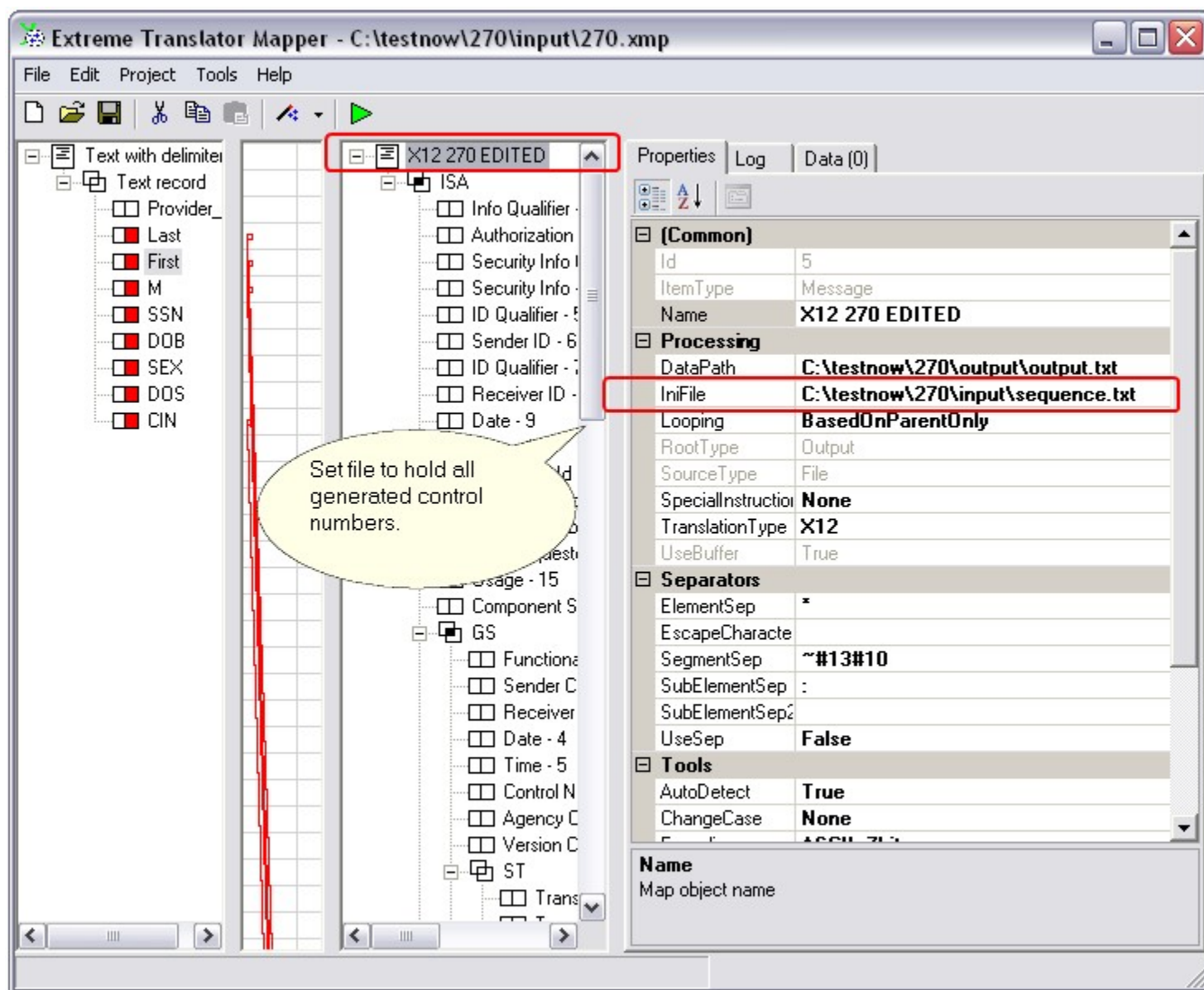
You can change EDI X12 separators (delimiters) that will be produced in the output.

How to do the mapping



You can simply select input, select output then right click on the output side and click "Map/Unmap" pop-up menu item.

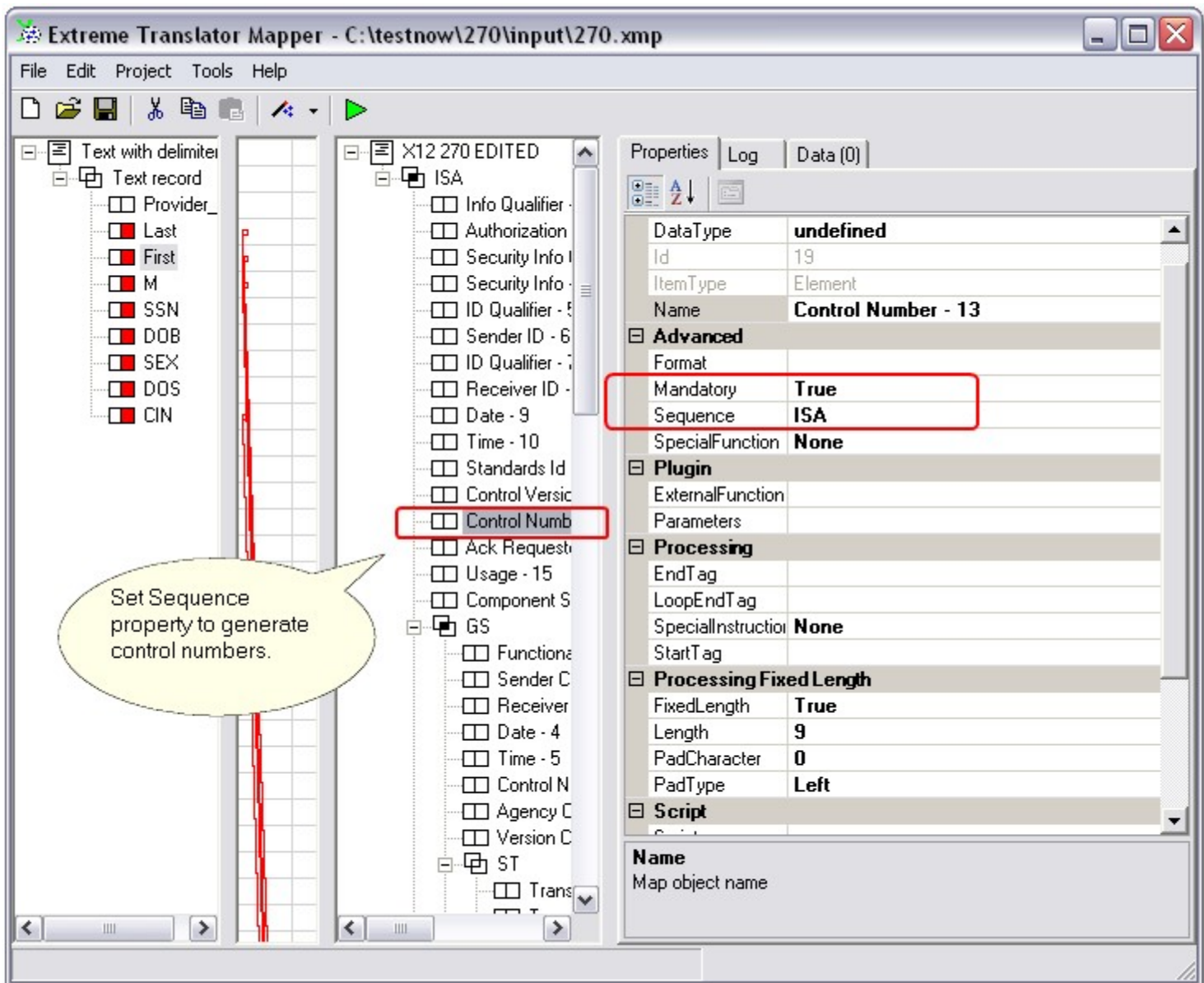
How to generate control numbers for ISA, GS, ST, SE, GE, IEA



Control numbers should increment with each output file produced. You can save current values of control numbers for next translation in order for them to increment and grow. IniFile property at the message level holds the name of the file that keeps generated control numbers between translations.

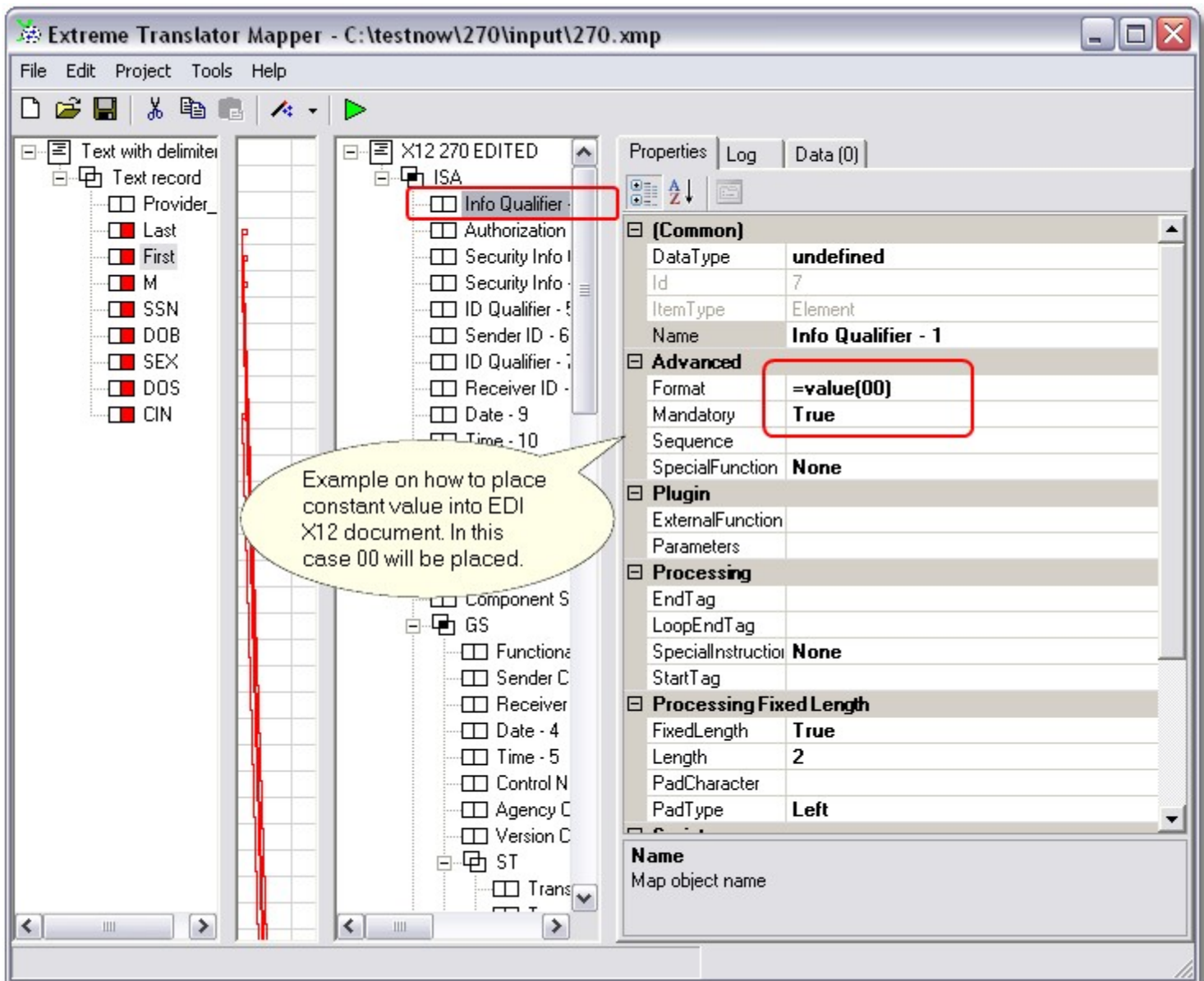
IniFile property is used with Sequence properties to generate and produce control numbers. Because EDI X12 control numbers should increment per each execution of the translation, IniFile property has the name of the file that will hold last generated control numbers, so next time translation runs those numbers would be incremented and new values would be used on each run.

If you decide to reset control numbers to initial value of one, simply delete the file IniFile property points to before you run next translation.



You can set control number generator using Sequence property. If you want to have control numbers to be fixed in width and padded with zeros on the left use FixedLength, Length and PadCharacter properties.

How to set constant values to be produced all the time

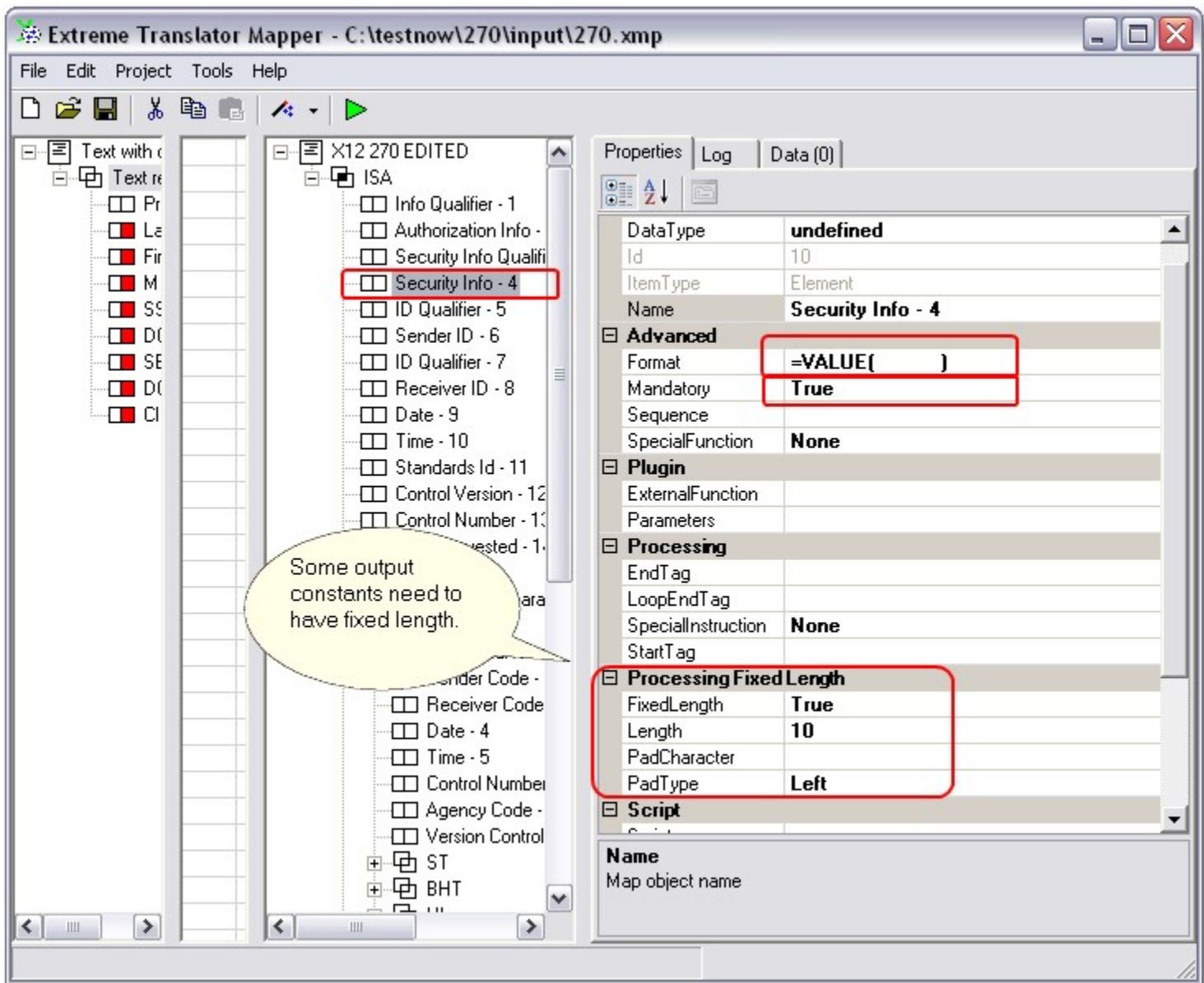


You can use combination of Format and Mandatory properties in order to produce constant value in the output.

If segment has no mappings to its nested elements and segments then it will not be produced in the output side. You can force such segment to be produced by setting it to Mandatory=True. If you also would like to output first few elements with fixed constant values make sure to set those elements to Mandatory=True as well.

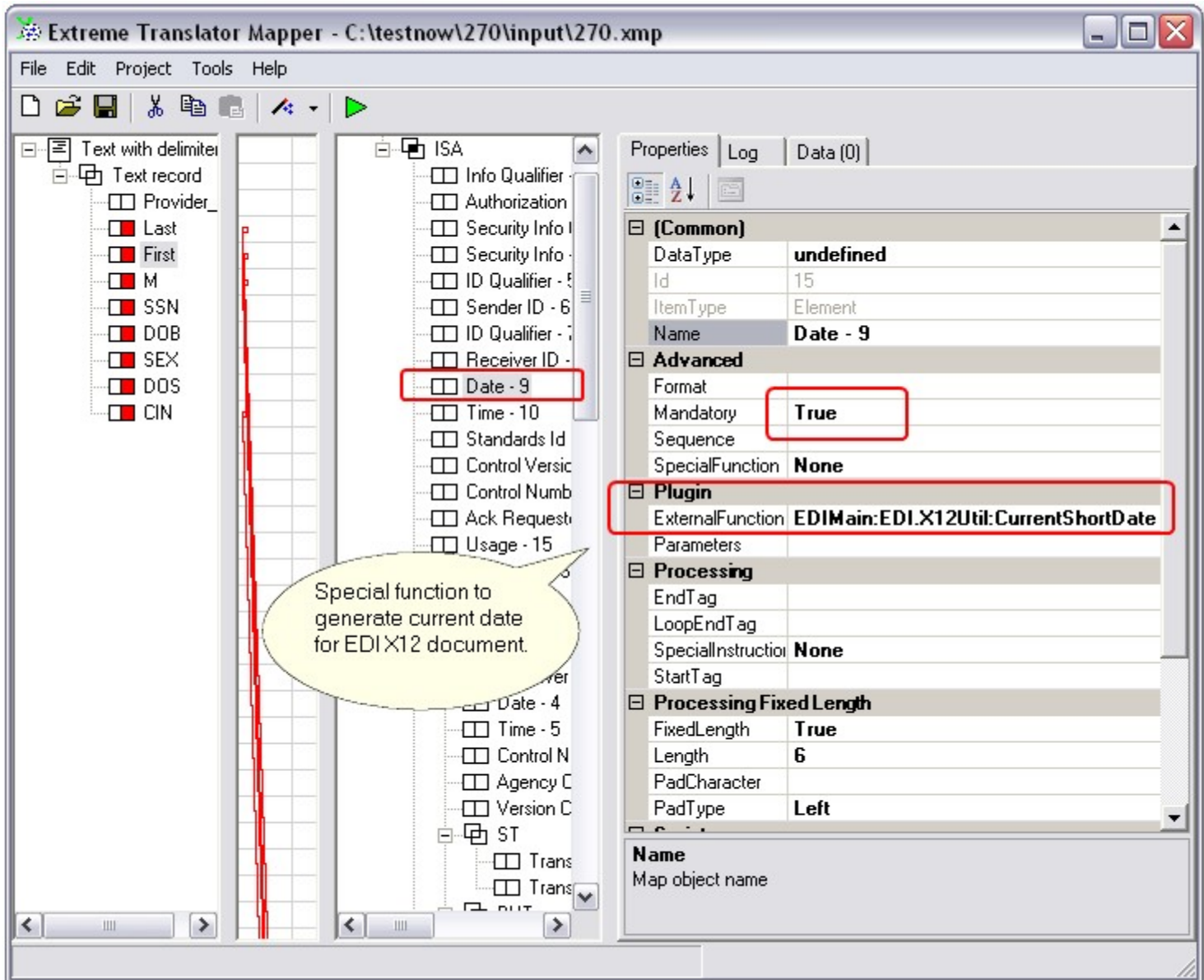
Basic idea is that Mandatory=True forces segment to be produced in the output even if segment has no mappings inside. But in order to also output elements of that segment you need to set them to Mandatory=True as well.

If you both map elements inside of the segment and also mark segment as Mandatory=True that segment will be produced twice.

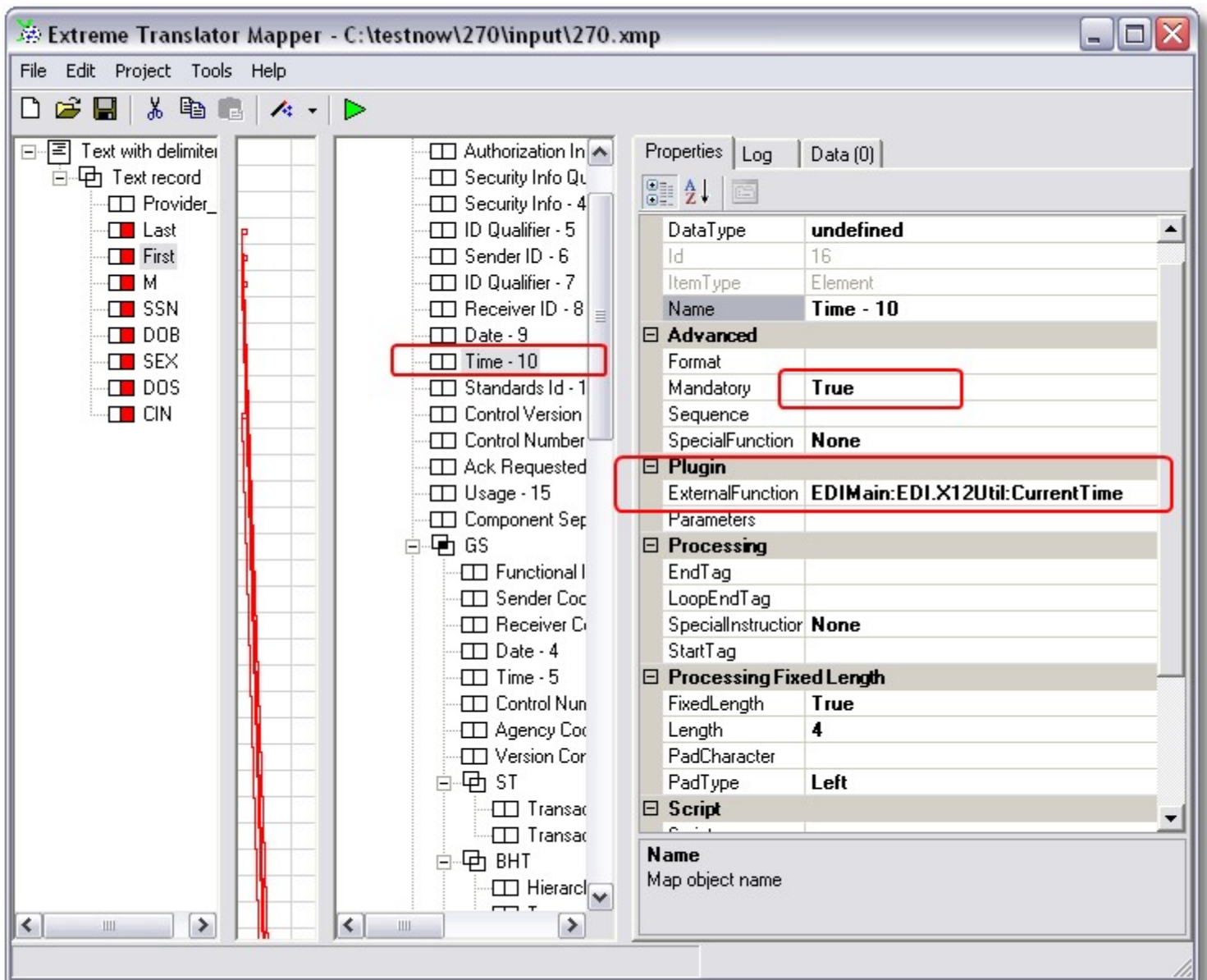


If you simply want to output spaces with the fixed length use properties indicated in this screenshot.

How to produce other EDI specific data like Date and Time

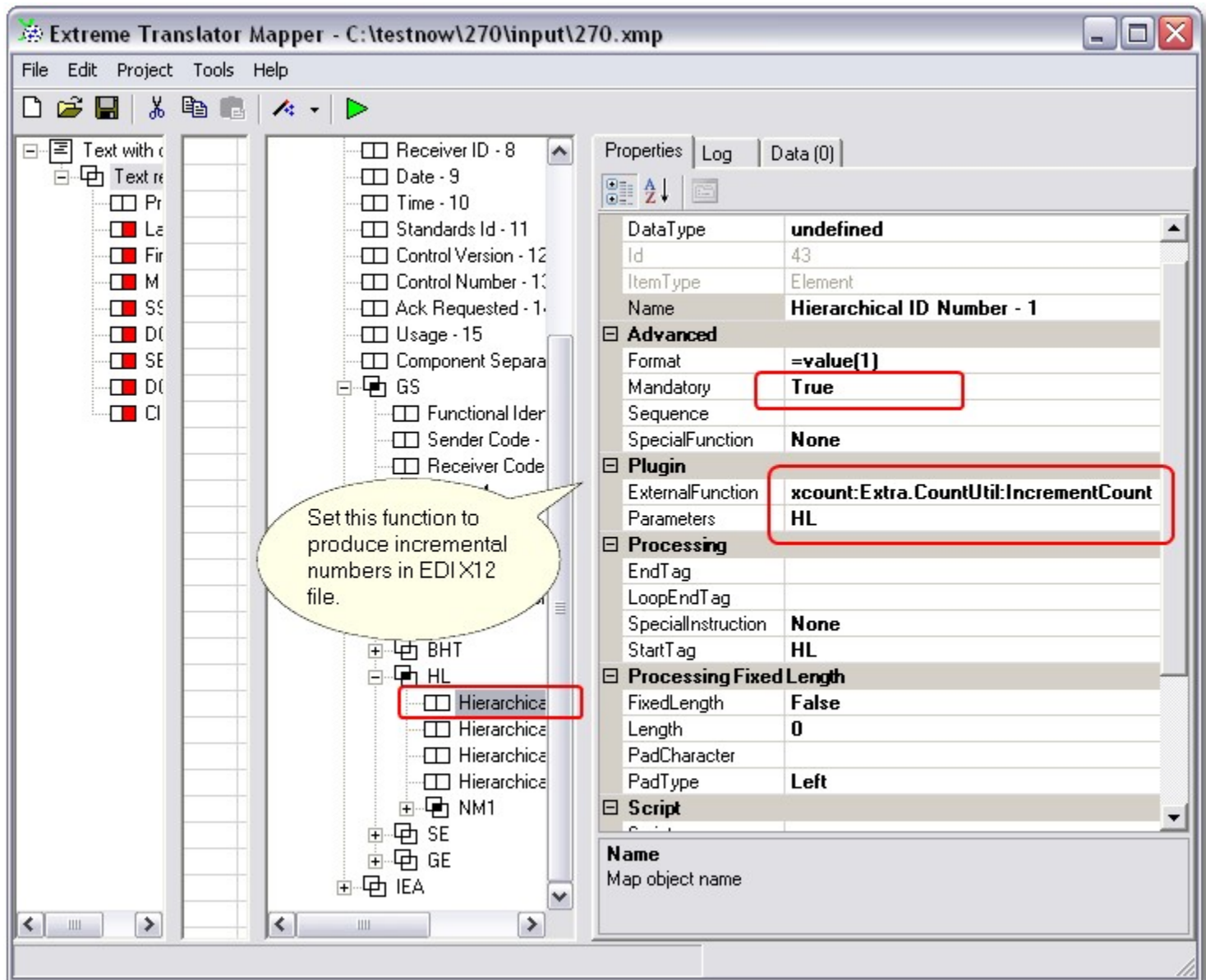


You can use specific functions listed in ExternalFunction to produce current date and time in the EDI X12 file. Please take a look at additional document for the listing of all available plug-ins that come with the product.



Use ExternalFunction to produce current time in "hhmm" format.

How to produce simple incrementing count



xcount library has number of functions to increment counts. They are all accessible via ExternalFunction drop down list. Please take a look at additional document for the listing of all available plug-ins that come with the product.

EDI X12 output

Once mapping is done click menu Project->Run to run the translation.

```

ISA*00*          *00*          *ZZ*TIN          *ZZ*EMEDNYBAT          *090903*1700~
GS*HS*TIN*EMEDNYBAT*20090903*1700*00002*X*004010X092A1~
BHT*0022*13**20090903*1700~
HL*1**20*1~
NM1*PR*2*NYSDOH*****FI*141797357~
HL*2*1*21*1~
NM1*1P*2*****SV*01208997~
HL*3*2*22*0~
TRN*1*999888777A*9~
NM1*IL*1*BIXBY*JOHN*L***MI*CK76276C~
REF*SY*999888777A~
DMG*D8*19350201*M~
DTP*472*D8*20050201~
HL*4*2*22*0~
TRN*1*123456789D*9~
NM1*IL*1*JONES*BETTY*B***MI*DB45612E~
REF*SY*123456789D~
DMG*D8*19250711*F~
DTP*472*D8*20050201~
HL*5*2*22*0~
TRN*1*456123789B*9~
NM1*IL*1*WHITE*BARRY*C***MI*BB58745W~
REF*SY*456123789B~
DMG*D8*13490801*M~
DTP*472*D8*20040101~
SE*24*0001~
GE*1*00002~

```

This output is provided for illustration purposes only. It does not contain any confidential information. It may not contain all the segments and elements you need for your EDI X12 270 message.